



Videoscope Quickreference

- Pre - Operating Check
- Limitation of Use
- Test Chart



Pre – Operation Check

Please run a small function check before operation, according to the procedure below.

Tip Control

Please turn control lever from one extreme position to the other.

If the lever is turned in the directions indicated on the housing, the articulation section is bent in corresponding planes.

U / D - The articulation section will move up or down

L / R - The articulation section will move left or right (only 4 Way Scopes)

Re-adjust levers into neutral position, which refers to a straight articulation section.



Control

Connect 5-Pin Plug of video scope with enclosed Y-Power supply cable to the 12V AC Adapter and the video jack of the desired monitor.

Image Quality

Please Adjust the Objective with enclosed lens tool. The image will go through the focus, getting sharp and will diffusing again.

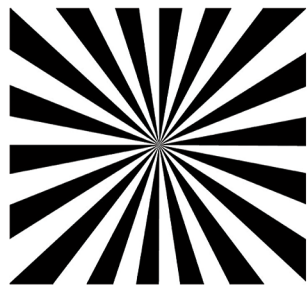
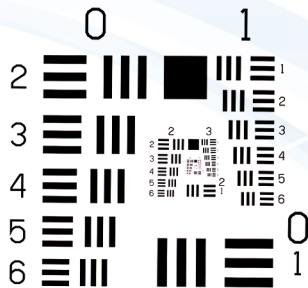
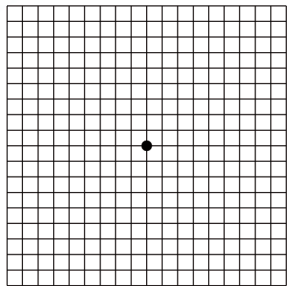
Limitation of use



Please read the user manual of the videoscope before use and follow the limitations given below before operation.

- **Do not** use excessive force during insertion or extraction of flexible portion.
- **Do not** straighten the articulation section in the foam insert of the case.
- **Do not** allow longitudinal movement of the up or down lever of the handle while in the locked position.
- **Do not** twist or bend flexible portion or light guide cable.
- **Do not** use videoscope for inspection of people or animals.
- **Do not** use videoscope for inspection of operating equipment or machinery while electrical current or voltage is present.
- **Do not** look directly into bright light of the end tip.
- **Do not** immerse housing the videoscope into water and do not wash under water stream.

Test Chart



C o n t a c t

Tel.: +49 (0) 6441 679299 - 0

Fax: +49 (0) 6441 679299 - 99

IT Concepts GmbH

Gewerbestr. 17

D - 35633 Lahnau

[www.itconceptsworld.de]

info@itconceptsworld.de